

ANTH 313, HISTORICAL ARCHAEOLOGY  
FIRST EXAMINATION

NAME \_\_\_\_\_

November 11, 2014

Discuss, define and/or list and identify

1. Define historical archaeology so as to differentiate it from prehistoric archaeology and classical archaeology. (4 pts)

2. Archaeologists in general work primarily with material culture which consists of the material or physical remains left behind by people of a culture and are excavated from archaeological sites. Define, listing each of the major components, defining it, (15 pts)

Material Culture:

- a. \_\_\_\_\_  
\_\_\_\_\_
- b. \_\_\_\_\_  
\_\_\_\_\_
- c. \_\_\_\_\_  
\_\_\_\_\_
- d. \_\_\_\_\_  
\_\_\_\_\_
- e. \_\_\_\_\_  
\_\_\_\_\_

3. One of the main objectives of any archaeological excavation and the subsequent research is to identify -----The key to all archaeological research is::: patterning in the distribution or selection by past occupants of the excavated material. (4 pts)

Define: a. primary context

b. secondary context

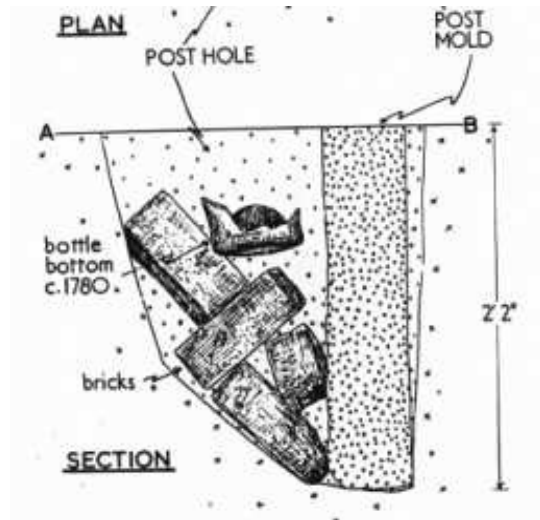
4. The figure to the right represents the basic promises of the law of superposition and two main ways of dating in archaeology. (6 pts)

a. Define terminus post quem

b. In the figure above, it is represented by:

c. Define terminus ante quem

d. In the figure above, this date is represented by:



5. Same question, different excavation profile: (2 pts)

a. The terminus ante quem date of the brick building construction is \_\_\_\_\_

b. The external brick wall fell (terminus post quem) is: \_\_\_\_\_

Thus the estimate life of the building is   a   to   b   + or -.

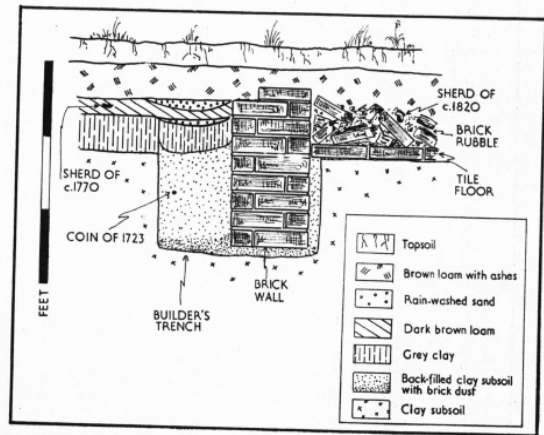
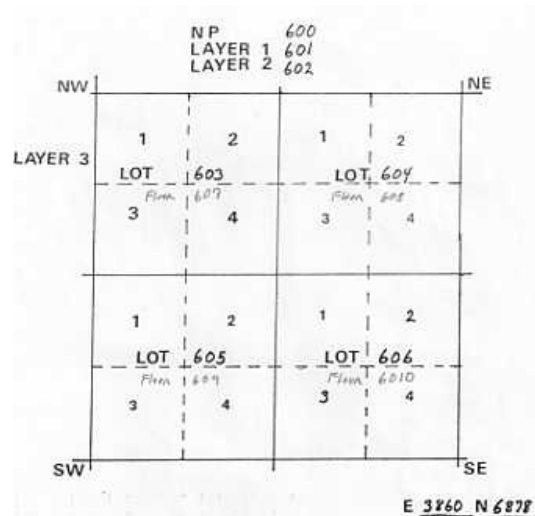


Fig. 15. Section through a wall and builder's trench showing how the birth, life, and death of a building can be determined from the careful recording of the positions of artifacts within their related strata.

5. what does the figure to the right represent? (2 pts)

6. Define Brunswick Refuse Disposal Pattern and how it was identifies. (5 pts)



7. Define Carolina Artifact Pattern and how it was defined. (5 pts)

8. Knowing what you know about the Carolina Pattern, you decide that you want to see what the artifact patterning of the Brazos Valley in Texas was in the mid to late 19<sup>th</sup> Century. How would you go about it. (5 pts)

9. Identify Wolstenholme - What, When, Where Why. (6 pts)

10. In the Wolstenholme excavations, what was the most common features found to identify the buildings and layout of the settlement? (2 pts)

11. List three essential excavation tools used at Wolstenholme include: (3 pts)

- a.
- b.
- c.

12. What artifacts stand out in the Wolstenholme excavations? List and explain why they stand out. (3 pts)

13. What documents played a major role in the research on the layout of the settlement at Wolstenholme

14. Identify Port Royal - What, When, Where Why. (6 pts)

15. In the Port Royal excavations, the most common features found to identify the building and layout of the town. (2 pts)

16. What artifacts stand out in the Port Royal Excavations. List and explain why they stand out.(3 pts)

17. Most three essential excavation tools were used at Port Royal include:(3 pts)

- a.
- b.
- c.

18. What documents played a major role in the research on the layout of Port Royal and what role did they play in the selection of the area to be excavated? (2 pts)

19. Who is Simon Benning? (3 pts)

20. What documents were used to bring out the details of Simon Benning's life. (3 pts)

21. What role do art work- paintings, etchings play in historic archaeology? (4 pts)

22. On the web site for this class, a site on probate and other records was posted. Identify the most commonly used documents discussed and the types of data that can be derived from them that would assist in the interpretation of an archaeological site and even assist you in tracing your own family genealogical record. (3 pts)

24. Documents from two sources were used by Dr. Hamilton in tracing his family tree that are not commonly used. They were: (2 pts)

a. \_\_\_\_\_

b. \_\_\_\_\_

25. Identify what is depicted in the figure to the right. (2 pts)



26. Identify what is depicted in figure to the right. (2 pts)



27. What brick bond pattern is shown to the right (2 pts).

a. \_\_\_\_\_

b. It is characterized by (proper description)

